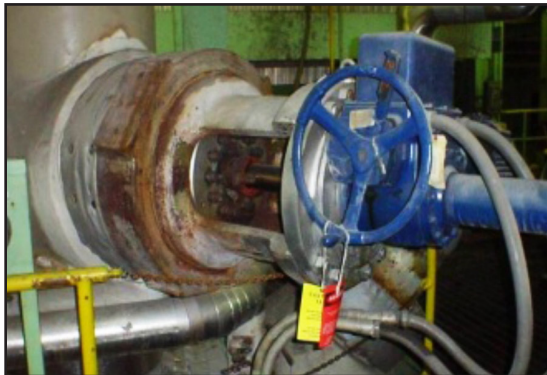


Challenge

Background

This large fossil power plant (1100 MW) experienced a catastrophic valve packing failure in 2003.

- A Chesterton Specialist found a stem cut to 0.089" under the OEM stem size
- Since there was no passive corrosion inhibitor in the competitor's packing, the stems and stuffing box bores had become pitted
- Correction attempts rendered critical tolerances beyond safe valve sealing



Circulating pump system.

Solution

Product

Install **Chesterton's Valve Sealing Solution**.

- (3) Sealing Rings of **Chesterton 5300 GTP** Die-Formed Graphite
- (2) End Rings of **Chesterton 1600** Inconel® Wire-Reinforced Graphite
- (1) **Chesterton 5100 Split Carbon Bushing** cut to proper length to fill the box

This solution offers major cost savings over replacing pitted valve stems and stuffing box sub-assemblies with OEM components.

Why Use Chesterton's Valve Sealing Solution?

- Passive corrosion inhibitor to prevent pitting
- Safe, proven leak-free service
- Chesterton 5300 for high pressure/temperature service
- Chesterton 5100 Carbon Bushing for proper compression and load transfer over the entire 5-ring set

Results

Documented Net Savings:
(based on reduced equipment repair): **\$102,190**

After 5 years of service with Chesterton, none of the 24 valves have leaked, nor do they have pitted stems or stuffing box bores.

An action plan was put in place to repack all (24) 3100# Class Boiler Water Circ Valve's over the following 2 years and restore the valves critical OEM dimensions needed for safe long-term and leak-free service.

\$=USD



Failed valve with leak seal injection port and 5-ring set installed.

INCONEL® are registered Trade Marks of Special Metals Corporation.

Technical data reflects results of laboratory tests and is intended to indicate general characteristics only. A.W. Chesterton Company disclaims all warranties expressed or implied, including warranties of merchantability and fitness for a particular purpose. Liability, if any, is limited to product replacement only. Any images contained herein are for general illustrative or aesthetic purposes only and are not intended to convey any instructional, safety, handling or usage information or advice respecting any product or equipment. Please refer to relevant Safety Data Sheets, Product Data Sheets, and/or Product Labels for safe use, storage, handling, and disposal of products, or consult with your local Chesterton sales representative.

A.W. Chesterton Company
860 Salem Street, Groveland, MA 01834 USA
© A.W. Chesterton Company, 2015. All rights reserved.
® Registered trademark owned and licensed by A.W. Chesterton Company
in USA and other countries, unless otherwise noted. WWW.CHESTERTONSTATIONARY.COM